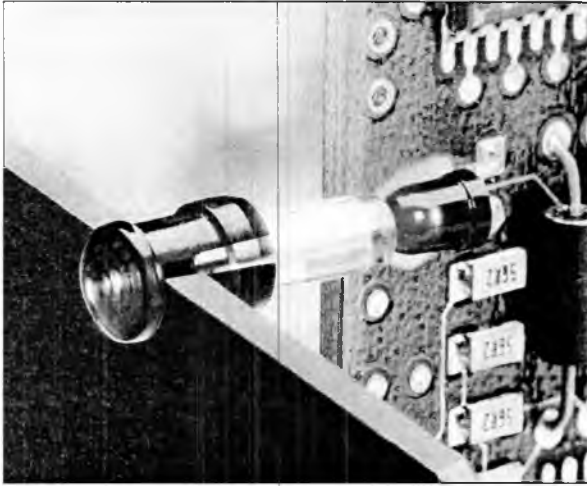


# CLIIPLITE®

**VISUAL COMMUNICATIONS COMPANY, INC.**

7920-G Arjons Dr., San Diego, CA 92126  
 In CA (858) 549-6900 (800) 522-5546  
 FAX (858) 549-3520 www.vcclite.com

## LITEPIPES & PANEL LENSES FOR PCB MOUNTED LEDs



U.S. & Foreign Pat. Pend.

### SPECIFICATIONS

- MATERIAL:** Litepipe - Acrylic (Optical grade)  
 Lens - Polycarbonate; Ring - Polypropylene (U.L. Listed Material).
- DESIGN:** LIPEPIPE (3mm and 5mm) with annular ring and locking tab engages into the annular groove of VCC's low profile lens. Lens mounts the litepipe securely to the display panel and provides 180 degrees of viewing angle.
- MOUNTING:** LITEPIPE 3mm - Mates with VCC's lenses model SMB 200 and SMQ 250. Panel mounting hole .171 (4.3mm) on 1/4" centers. Panel thickness 1/32" to 1/8". Litepipe lengths from .200" to 1.200".
- LITEPIPE 5mm - Mates with VCC's lense model CLB 300 and SQB 400. Panel mounting hole .250 (6.35mm) on 3/8" centers. Panel thickness 1/32" to 1/4". Litepipe lengths from .360" to 1.360". For panels less than 3/16" use SPC 125 spacer.
- LENSE RETAINING RING - available for added security (RNG 190, 3mm & RNG 268, 5mm).

**STANDOFF** Use VCC's standoff to adjust the height of a standard LED above the PCB and maintain a maximum .050" clearance between litepipe and LED. See VCC's STD Series data sheet.

### ORDERING CODE: LITEPIPE

MODEL <u>LSV 020 CTP</u>		COLOR
LSV (3mm), LCV (5mm)		CTP CLEAR
PRODUCT CODE		
LSV - CODE LENGTH (inches)	LCV - CODE LENGTH (inches)	
020 (.200") 040 (.400") 060 (.600")	036 (.360") 056 (.560") 076 (.760")	
080 (.800") 100 (1.00") 120 (1.20")	096 (.960") 116 (1.16") 136 (1.36")	

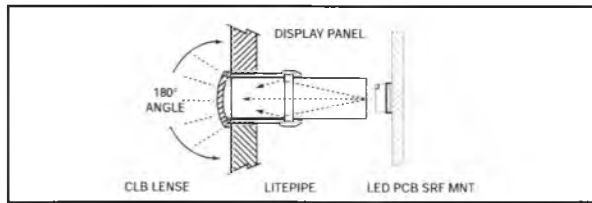
**VERSATILITY** - CLIIPLITE litepipe and lense easily provide a means of transmitting the light from PCB mounted LEDs to the front display panel. Both styles of LEDs, surface mount and standard packages, can be displayed in this manner.

**BRIGHTNESS** - CLIIPLITE litepipe by itself has a limited angle of view. However, when used with VCC's fresnel lense the light is disbursed over the entire lense surface producing 180 degrees of viewing.

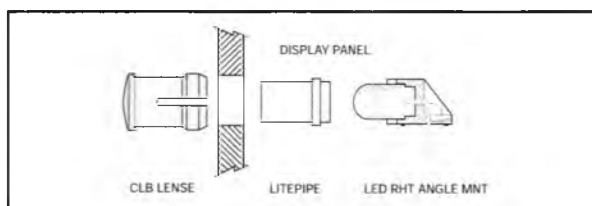
**APPLICATION** - CLIIPLITE litepipes and lenses are available for use with both surface mount and standard packaged LEDs in 3mm and 5mm configurations. Because there is no physical connection between the litepipe and the PCB mounted LED, the circuit board can be installed or removed without disturbing the panel display.

**INSTALLATION** - CLIIPLITE litepipe and lense are easy to install. Insert the lense thru the panel opening and snap the litepipe into the lense. For added security in harsh environments, a retaining ring is available.

### LITEPIPE & SURFACE MOUNT LEDs

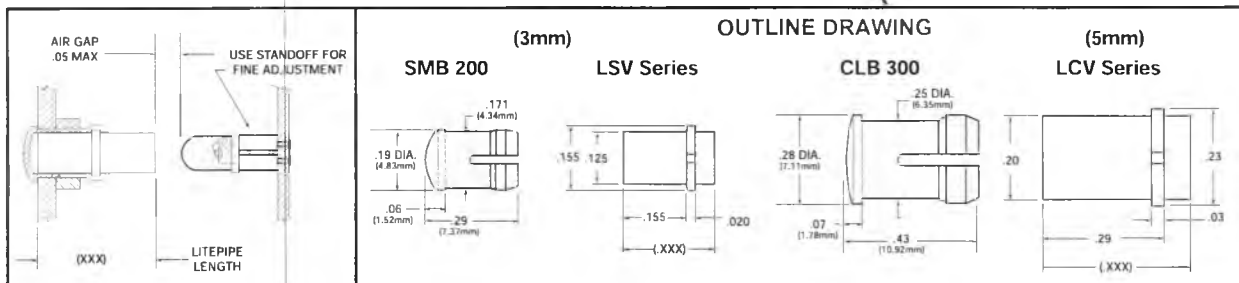


### LITEPIPE & RIGHT ANGLE LEDs



### ORDERING CODE: LENSE

MODEL	<u>CLB 300</u>	RTP	<u>CLB300 CTP</u>
			<i>- Mo user (color) #</i>
		COLOR	<u>593-3000C</u>
			<u>593-SPC125</u>
SMB 200 (RND 3mm)	RTP	Red Transparent	
SMQ 250 (SQ 3mm)	ATP	Amber Transparent	
CLB 300 (RND 5mm)	GTP	Green Transparent	
SQB 400 (SQ 5mm)	BTP	Blue Transparent	
SPC 125 (Spacer for CLB 300 & SQB 400)	YTP	Yellow Transparent	
	CTP	Clear Transparent	



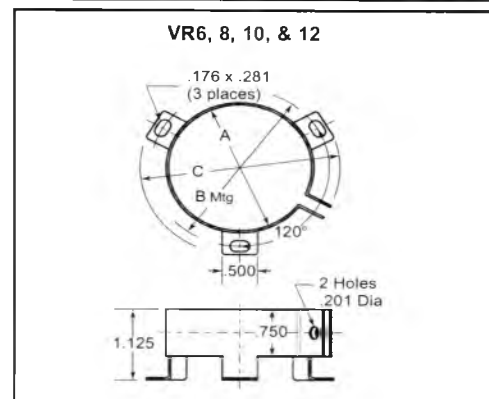
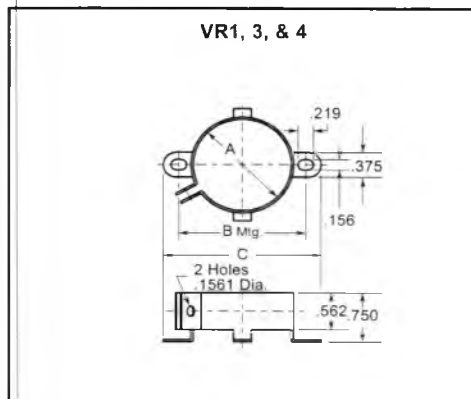
## TYPE VR VERTICAL MOUNTING CLAMP

Hardware



Diameter of Part to be Mounted	Catalog Number			Dimensions		
	Without Screw & Nut	Unassembled Screw & Nut Included	Assembled with Screw & Nut	A	B	C
1" to 1-1/16"	VR1B	VR1	VR1A	1"	1-7/16"	1-7/8"
1-3/8" to 1-7/16"	VR3B	VR3	VR3A	1-3/8"	1-25/32"	2-7/32"
1-1/2" to 1-9/16"	VR4B	VR4	VR4A	1-1/2"	1-15/16"	2-11/32"
1-3/4" to 1-13/16"	VR6B	VR6	VR6A	1-3/4"	2-1/4"	2-9/16"
2" to 2-1/16"	VR8B	VR8	VR8A	2"	2-1/2"	2-13/16"
2-1/2" to 2-9/16"	VR10B	VR10	VR10A	2-1/2"	3"	3-5/16"
3" to 3-1/8"	VR12B	VR12	VR12A	3"	3-7/16"	3-13/16"
Screw	VRSCREW	—	—	9/16" long 6-32 thread NC-2A		
Nut	VRNUT	—	—	Standard hex nut to fit screw		

NACC VR mounting clamps may be used to mount any cylindrical capacitor with a 1" to 3" diameter that is to be mounted in a vertical position. Material is 1010 CRS, commercial grade #4 temper ASI-scale. Parts are finished with .0001 (nominal) zinc chromate plating. Use for mounting CG types, PSU, HC/NP and MPD/MPF types. Material thickness is .035"



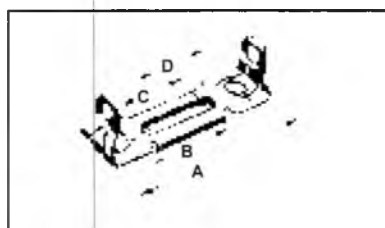
## MOUNTING ACCESSORIES FOR PSU AND HC/NP TYPE CAPACITORS

### Type HB Horizontal Mounting Bracket

EIA Case Code	Dimensions				Catalog Number
	A	B	C*	D	
1	3-3/8"	1-11/64"	7/8"	1.258	HB2
2-4-6	4-1/64"	1-13/16"	1-1/2"	1-37/64	HB4
3-5-7-8	5-1/64"	2-23/32"	1 25/32"	2-5/64"	HB8

HB brackets are used with PL or PLA end caps. The bracket is assembled to the motor or any suitable surface by two screws in line at any convenient position within the center-to-center dimension (C) shown in the chart.

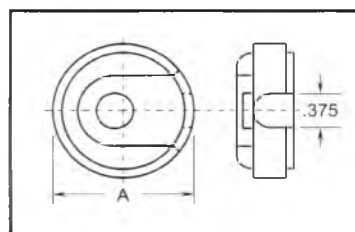
Material: .042 spring steel with black parkerized finish



\*C dimension = max mounting hole center  
Use 10-32" flat head screws

### Type PL and PLA End Caps

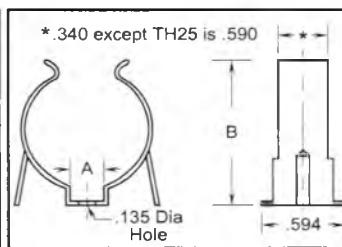
EIA Case Code	A Dimension	Catalog Number	
		Wire Hole Toward Bracket	Wire Hole Away From Bracket
1-2-3	1-7/16"	PL3	PLA3
4-5	1-13/16"	PL6	PLA6
6-7	2-1/16"	PL8	PLA8
8	2-9/16"	PL10	PLA10



PL and PLA end caps are usually used with HB type brackets. The drawing shown at left is type PL for use with the wiring through the bracket to the motor. For off motor mounting, use type PLA. See page 214 for a photo showing a capacitor and end cap mounted in a bracket.

## TYPE TH HORIZONTAL MOUNTING CLIP

Nominal Diameter of Part to be Mounted	Dimensions		Catalog Number
	A	B	
.375	.250	.470	TH13
.500	.250	.620	TH15
.625	.312	.720	TH17
.750	.312	.890	TH19
.875	.312	1.000	TH21
1.000	.312	1.060	TH23
1.375	.312	1.500	TH25



These clips, though designed for capacitors, have varied applications to retain many cylindrical components. They are used extensively in the electrical and electronic industries to hold spindles, condensers, capacitors, tubes, rods and conduit. Clips have phosphate and oil finish.

Material thickness TH13 thru TH17 is .016". TH19 thru TH25 is .020"